



Graphic Image courtesy of <https://www.google.com/maps>



MS150 Rider Route (Highlighted)

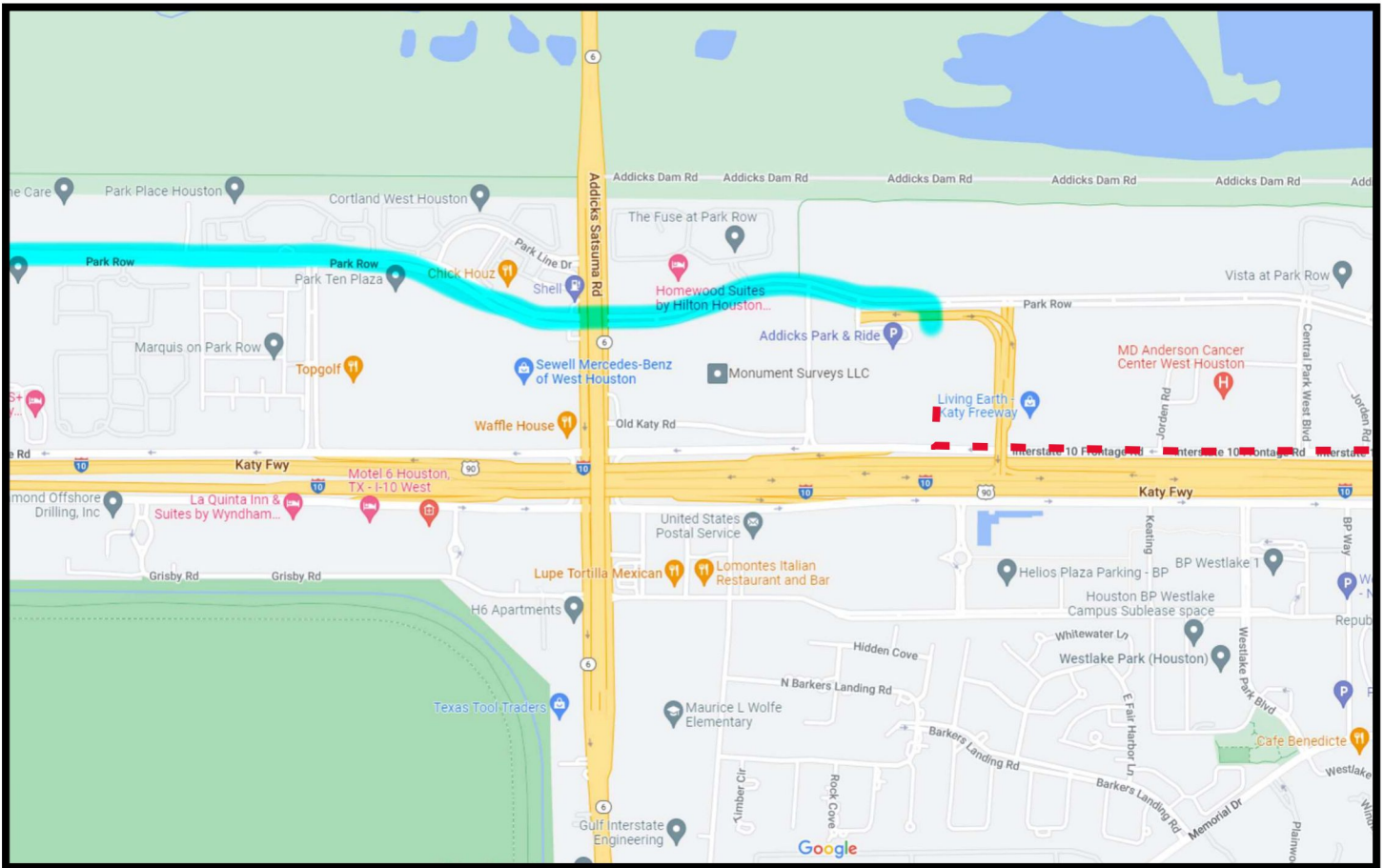
Preferred Vehicle Alternate Route

**Saturday 55 Mile Starting Line
 Bellville Jr. High School Brahma Stadium
 RIDER START - 9:30 AM**

**** These instructions start at I-10 and Highway 36 (Sealy TX.).**

- If traveling from downtown Houston, travel on I-10 to Highway 36. Exit the freeway and curve around back to Highway 36, and turn Left (you will be travelling North)
- Travel 12.8 miles North. You will come to the 3-Way Intersection with FM-2429. Turn Left.
- Travel 0.3 miles West and you will turn Right on Schumann Road.
- Travel 0.5 miles Northwest to S. Tesch Road, turn Right and park in the Brahma Stadium parking lot.

Brahma Stadium
 1305 S. Tesch St.
 Bellville, TX 77418
 GPS 29.92741, -96.25369



MS150 Rider Route (Highlighted)



Preferred Vehicle Alternate Route

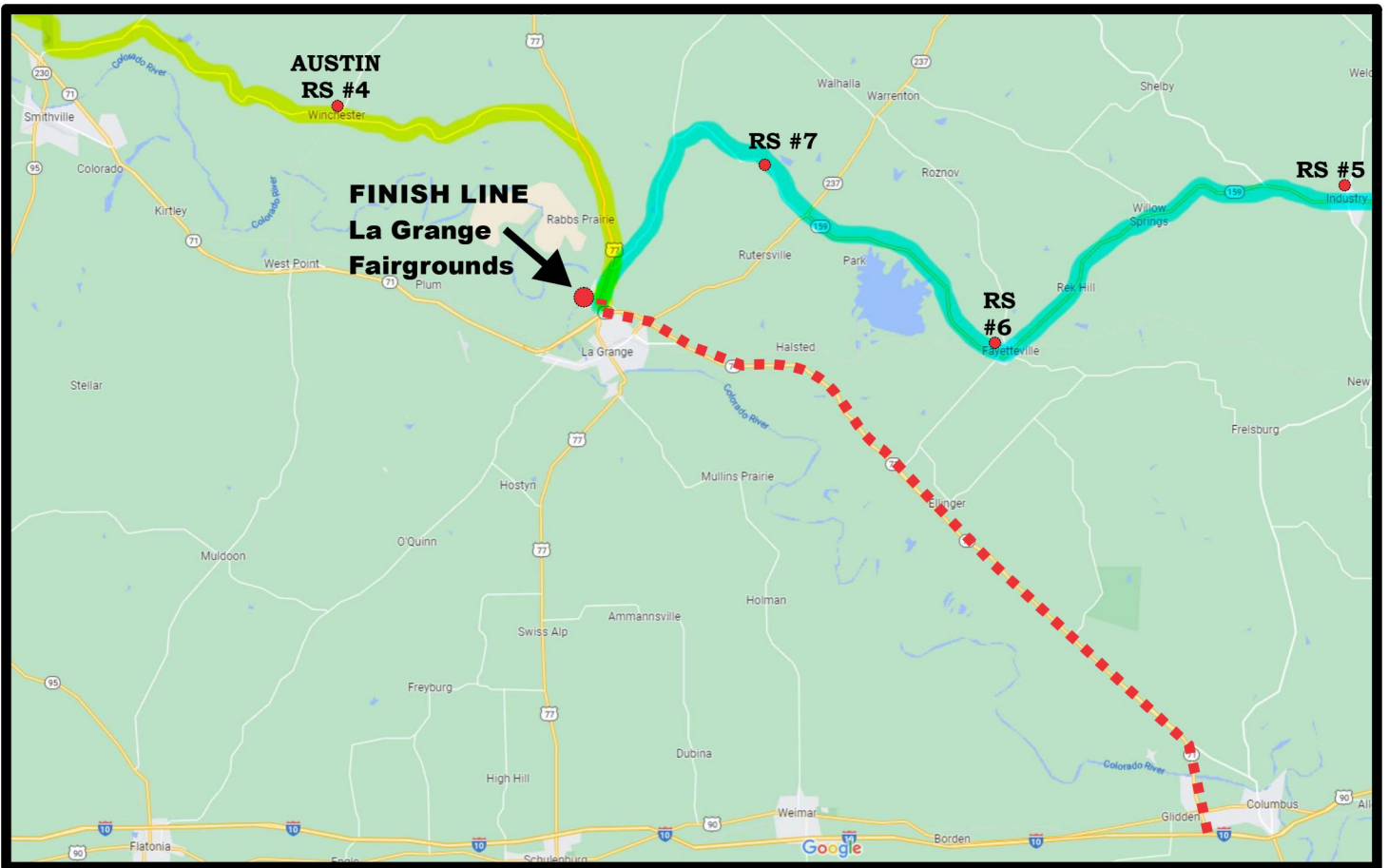
**Saturday 100 Mile Starting Line
Energy Corridor Start
Addicks Park and Ride
RIDER START - 6:45 AM**

- The Starting Line is going to have some police assistance to control traffic. You should be arriving early enough to get to one of the Parking Areas in the Addicks Park and Ride. This is close to I-10 and Highway 6.

** These instructions start at I-10 heading westbound and approaching Highway 6 - cyclists should take exit 751 and stay in the right hand lane of the I-10 Frontage Road.

- You will travel 0.8 miles, and then turn right into the Addicks Park and Ride. You will be directed to the Cyclists Parking area.

- If you are volunteering, make of note of where you parked. There will be a few thousand cars in the parking lot when the Starting Line is being shut down.



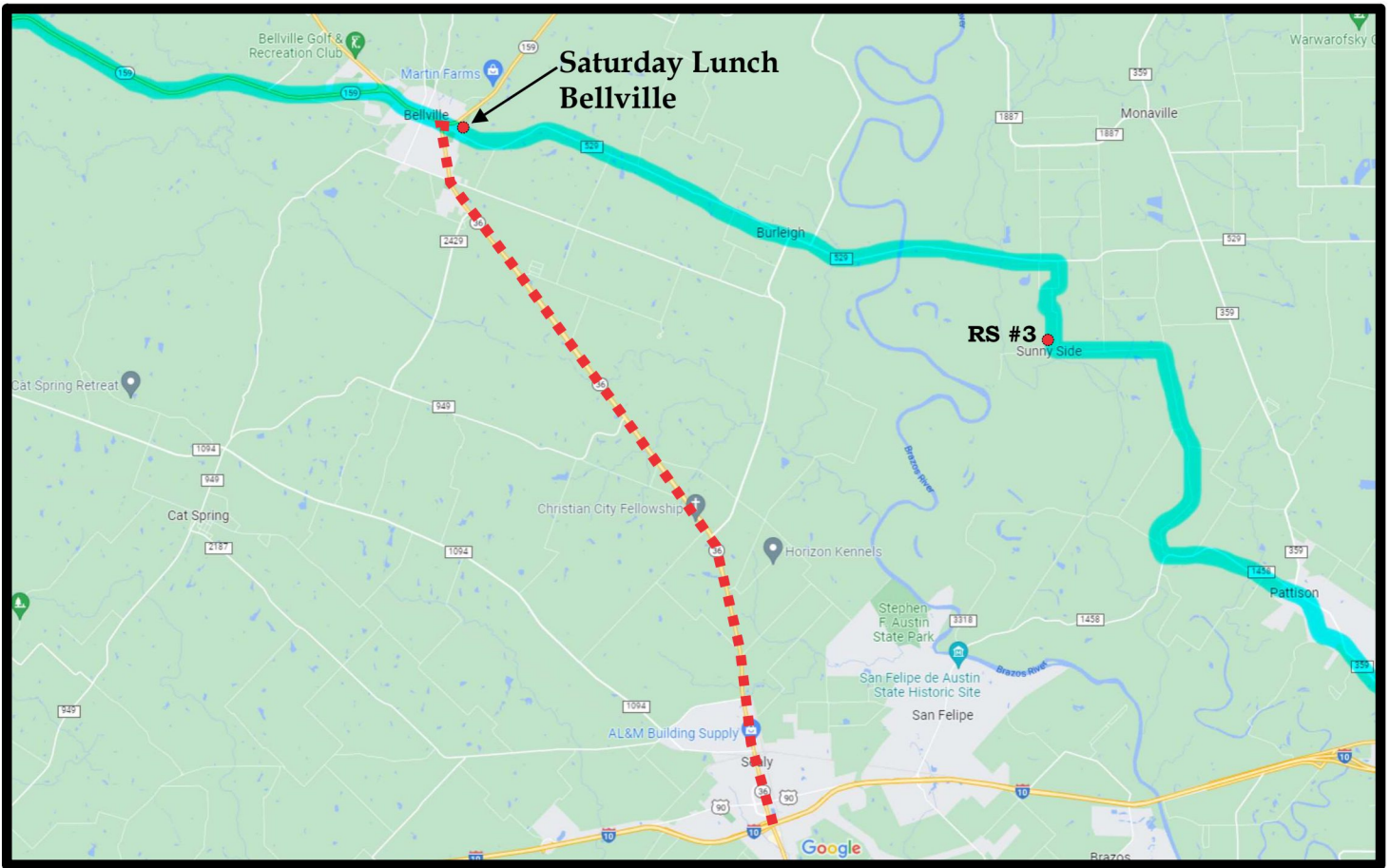
MS150 Rider Route (Highlighted)
Preferred Vehicle Alternate Route

La Grange Fairgrounds

Please avoid the route taken by the cyclists

** These instructions start at I-10 and Highway 71 (Columbus TX.).

- If traveling from downtown Houston, travel on I-10 to Highway 71. Be aware that there is a Highway 71 Business that goes through downtown Columbus (and has lots of traffic lights). You need to look for the Highway 71 bypass on the West side of Columbus. Exit the freeway and take a right on Highway 71.
- Travel 26 miles North. You will take the exit for Highway 77. Turn right.
- Travel ½ mile North on Highway 77 to the entrance of the Fairgrounds.
- An **ALL-ACCESS** pass will be required to park in the La Grange Fairgrounds. Or, you can park in one of the Alternate Parking locations and take a free shuttle.



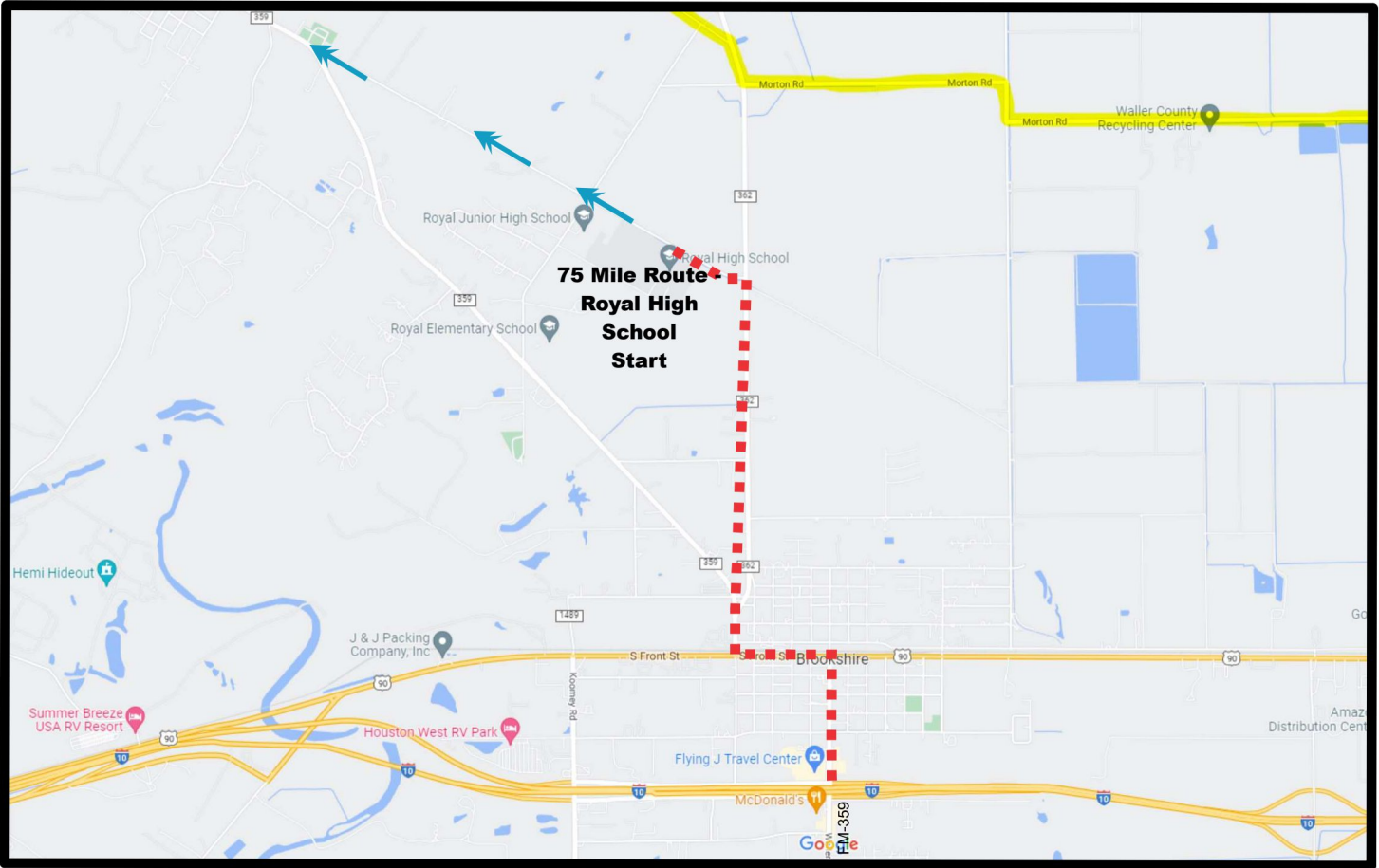
MS150 Rider Route (Highlighted)
Preferred Vehicle Alternate Route

Saturday Lunch
Austin County Fairgrounds
Bellville Texas
VOLUNTEER HOURS - 7:30 AM TO 3:30 PM

**** These instructions start at I-10 and Highway 36 (Sealy TX.).**

- If traveling from downtown Houston, travel on I-10 to Highway 36. Exit the freeway and curve around back to Highway 36, and turn Left (you will be travelling North)
- Travel 14½ miles North. You will come to the 4-Way Intersection with FM-159. Turn right.
- Travel 0.4 miles East and you will see the entrance for the Austin County Fairgrounds. Park in the volunteer lot on the North side.

Austin County Fairgrounds
 Bellville, TX 77418
 GPS 29.9462N 96.2487W



Graphic Image courtesy of <https://www.google.com/maps>



MS150 Rider Route (Highlighted)

Preferred Vehicle Alternate Route

Saturday 75 Mile Starting Line Royal High School Start RIDER START - 8:30 AM

** These instructions start at I-10 and FM-359 (Brookshire TX.).

- If traveling from downtown Houston, travel on I-10 to FM-359. Exit the freeway and take a right on FM-359.

- Travel ½ mile North. You will come to the 4 Way Intersection with US-90 Business. Turn left.

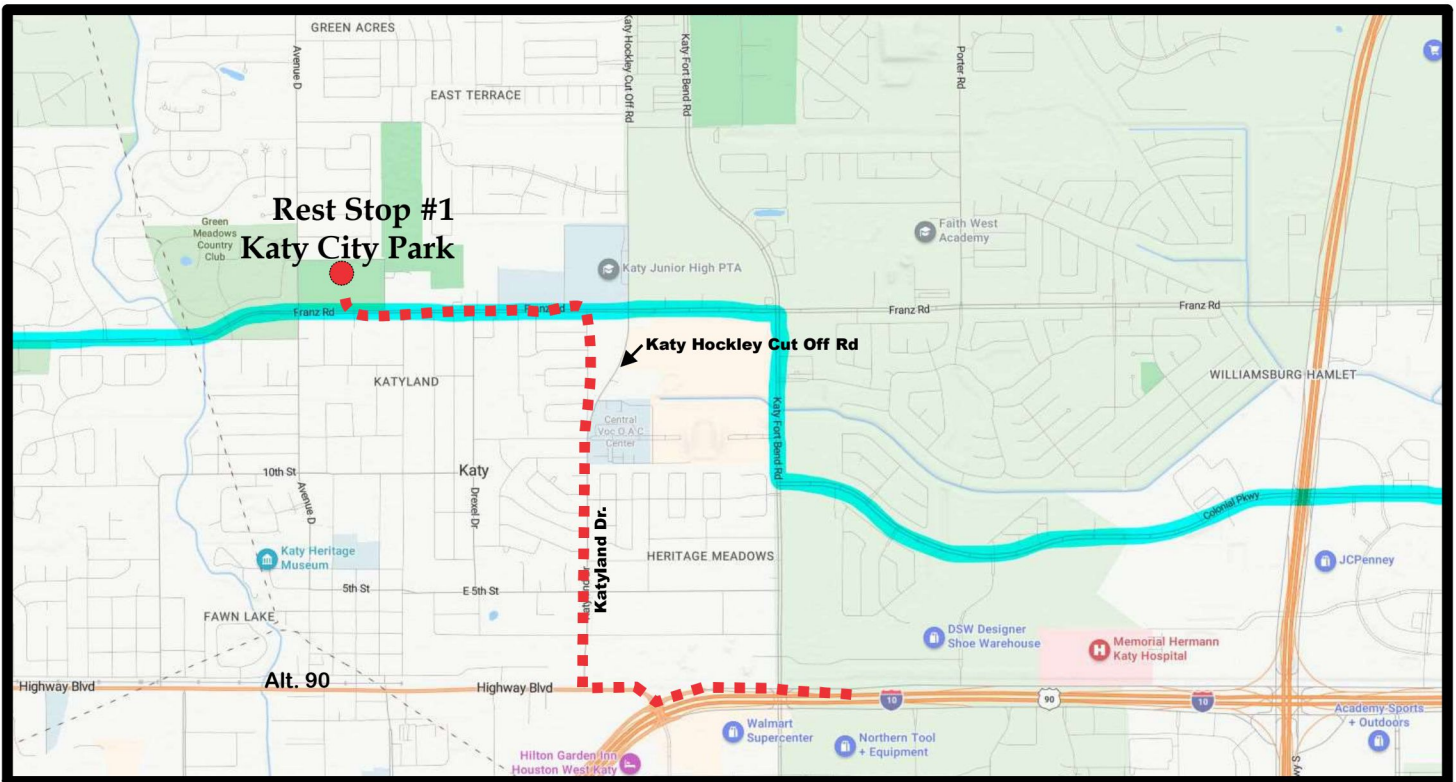
- Travel 0.4 miles on US-90 Business to the 4 Way Intersection with FM-359. Turn right.

- Travel 350 yards on FM-359 to the flashing light with FM-362. Veer to the right.

- Travel North 1.25 miles to Royal Road, turn left.

- The entrance to Rest Stop 2 (Royal High School) is 0.35 miles from the intersection. Turn left into the parking lot.

Royal High School
 34499 Royal Rd
 Brookshire, TX
 GPS: 29.8086N -95.9607W



MS150 Rider Route (Highlighted)

Preferred Vehicle Alternate Route

Saturday Rest Stop 1

Please avoid the route taken by the Cyclists

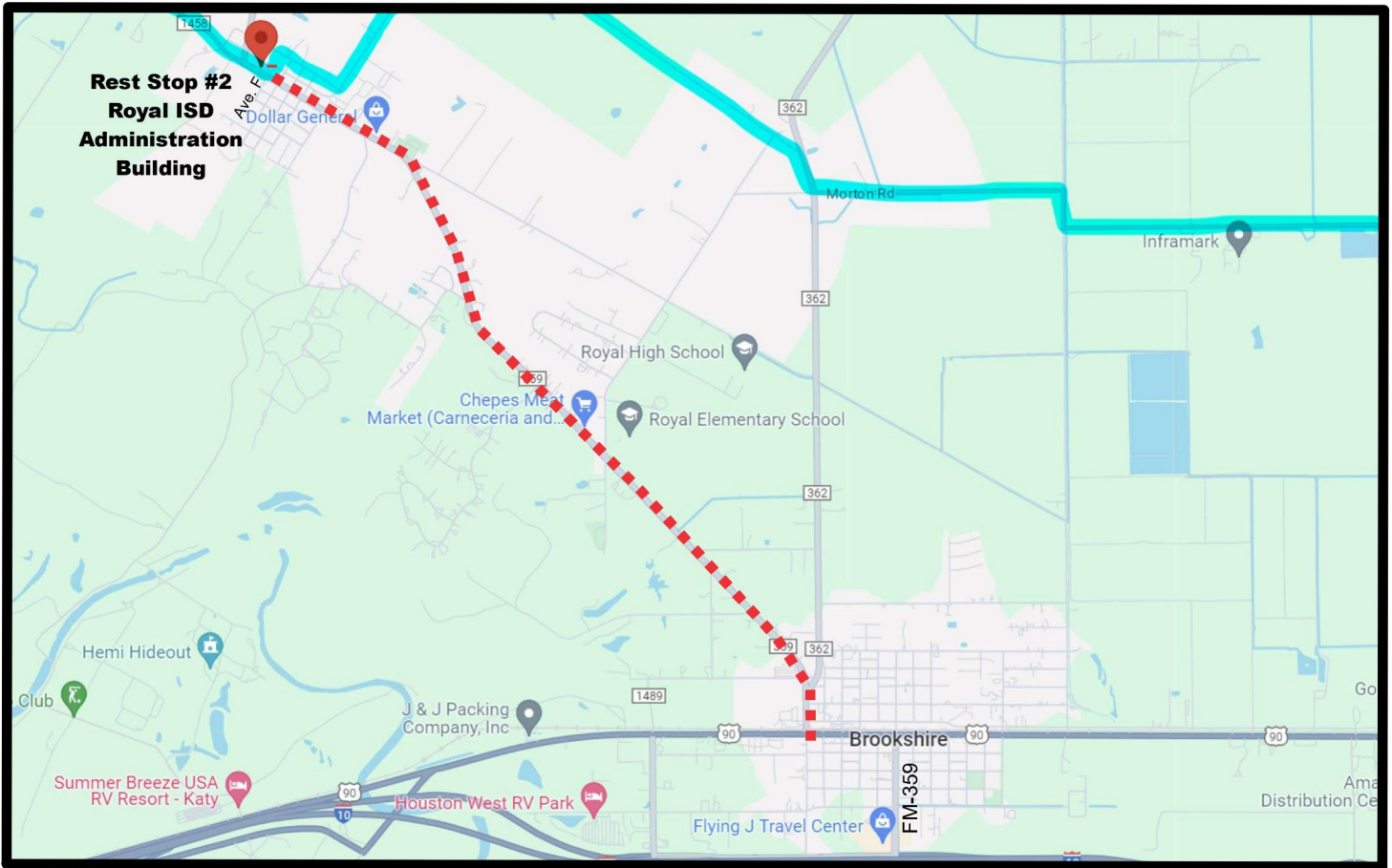
VOLUNTEER HOURS - 6:00 AM TO 10:00 AM

**** These instructions start at I-10 at EXIT 741.**

- If traveling from downtown Houston, travel on I-10 to Old Katy Road West, EXIT 741. Exit the freeway and stay on the feeder.
- Travel 0.4 miles West. You will Turn Right on Old Katy Road / Highway Blvd.
- Travel 0.2 miles on Old Katy Road / Highway Blvd. and Turn Right on Katyland Drive. Be aware Katyland Drive splits, and the right branch turns into Katy Hockley Cut Off Road.
- Travel north 0.8 miles to Franz Road and Turn Left.
- Travel 0.75 miles to Katy City Park, Turn Right to enter the parking lot. Please see the Parking Lot layout for additional details.

Katy City Park
5850 Franz Rd.
Katy, TX 77493

GPS 29.801698, -95.823260



MS150 Rider Route (Highlighted)
Preferred Vehicle Alternate Route

Saturday Rest Stop #2

Please avoid the route taken by the riders
VOLUNTEER HOURS - 6:00 AM TO 11:00 AM

** These instructions start at I-10 and FM-359 (Brookshire TX.).

- If traveling from downtown Houston, travel on I-10 to FM-359. Exit the freeway and take a right on FM-359.

- Travel ½ mile North. You will come to the 4 Way Intersection with US-90 Business. Turn left.

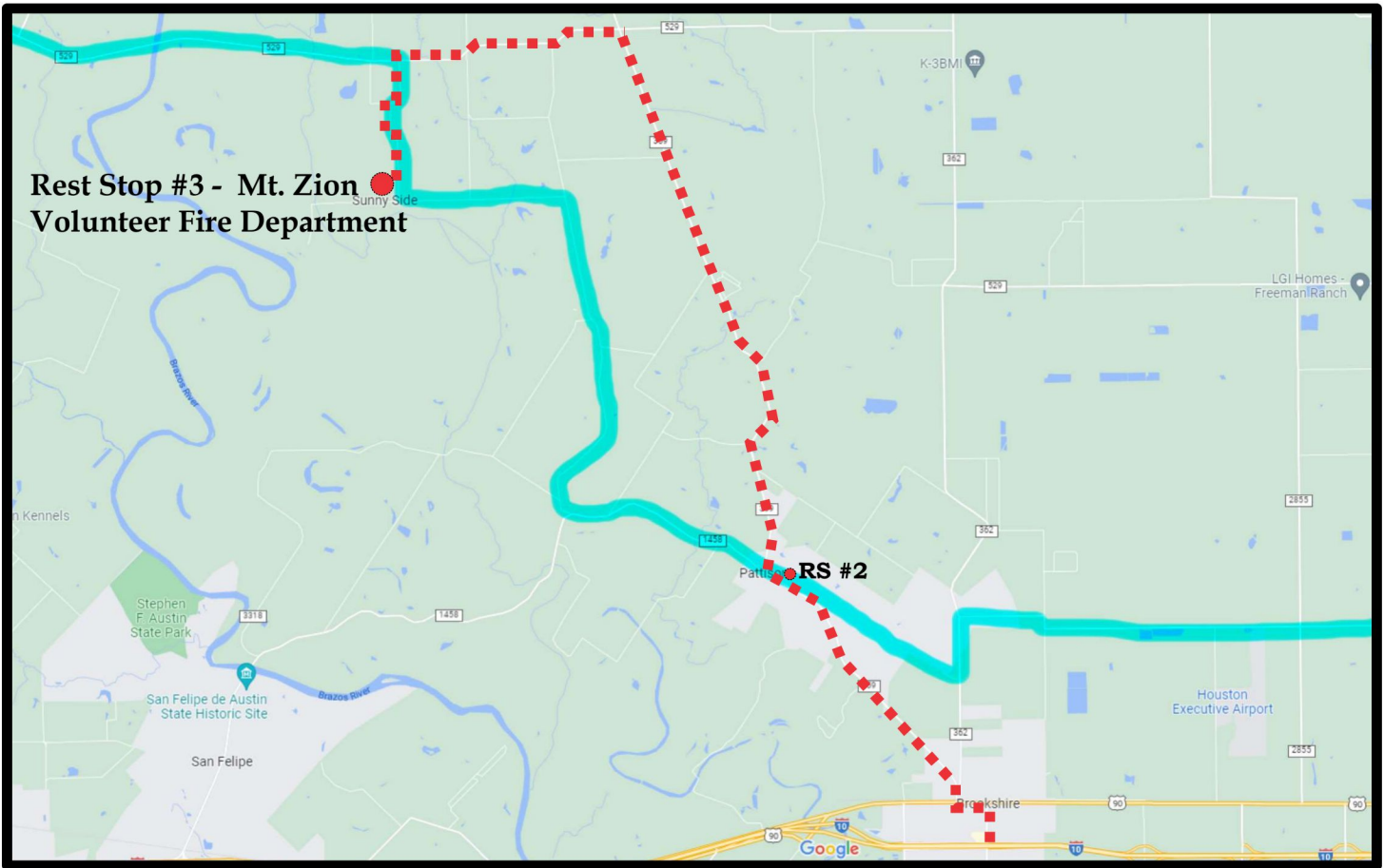
- Travel 0.4 miles on US-90 Business to the 4 Way Intersection with FM-359. Turn right.

- Travel 3.5 miles on FM-359 to Avenue F, turn right.

- Travel 0.1 miles to the entrance to the parking lot of Royal ISD, turn left.

- See the Rest Stop layout for where to find Volunteer Parking.

Royal ISD Administration Building
3714 FM 359
Pattison, TX 77466
GPS: 29.825289, -95.992292



Graphic Image courtesy of <https://www.google.com/maps>



MS150 Rider Route (Highlighted)

Preferred Vehicle Alternate Route

Saturday Rest Stop #3

Please avoid the route taken by the riders

VOLUNTEER HOURS - 6:30 AM TO 12:30 PM

** These instructions start at I-10 and FM-359 (Brookshire TX.).

- If traveling from downtown Houston, travel on I-10 to FM-359. Exit the freeway and take a right on FM-359.

- Travel ½ mile North. You will come to the 4 Way Intersection with US-90 Business. Turn left.

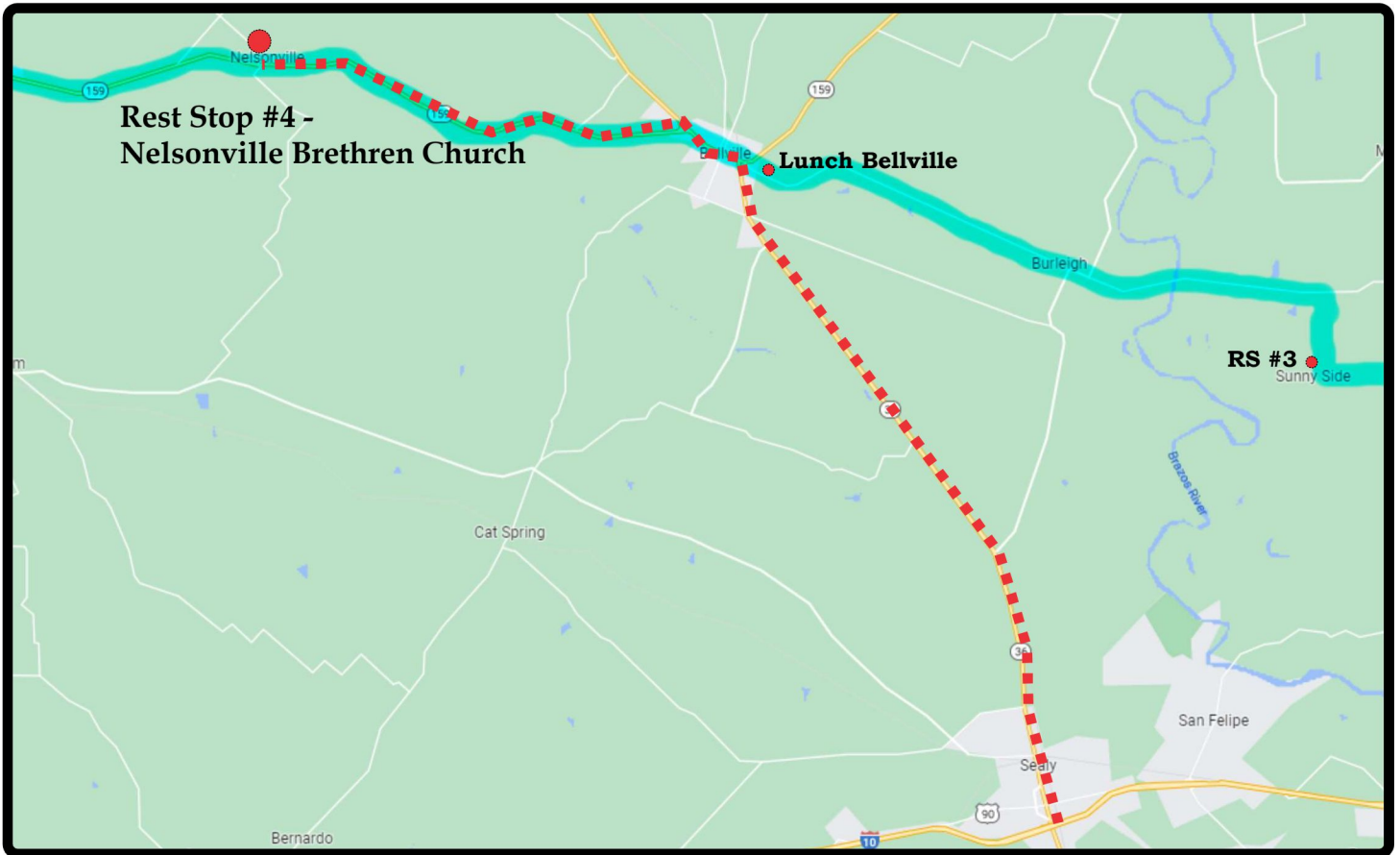
- Travel 0.4 miles on US-90 Business to the 4 Way Intersection with FM-359. Turn right.

- Travel 10.6 miles on FM-359 to the 4 Way Intersection with FM-529. Turn left.

- Travel 2.7 miles to Sunny Side Road. Turn left.

- Travel 1.2 miles as the road zig-zags - Rest Stop #3 will be on your right at the Mt. Zion Volunteer Fire Department.

Mt. Zion VFD
8083 Sunny Side Road
Brookshire, TX 77445



Graphic Image courtesy of <https://www.google.com/maps>



MS150 Rider Route (Highlighted)

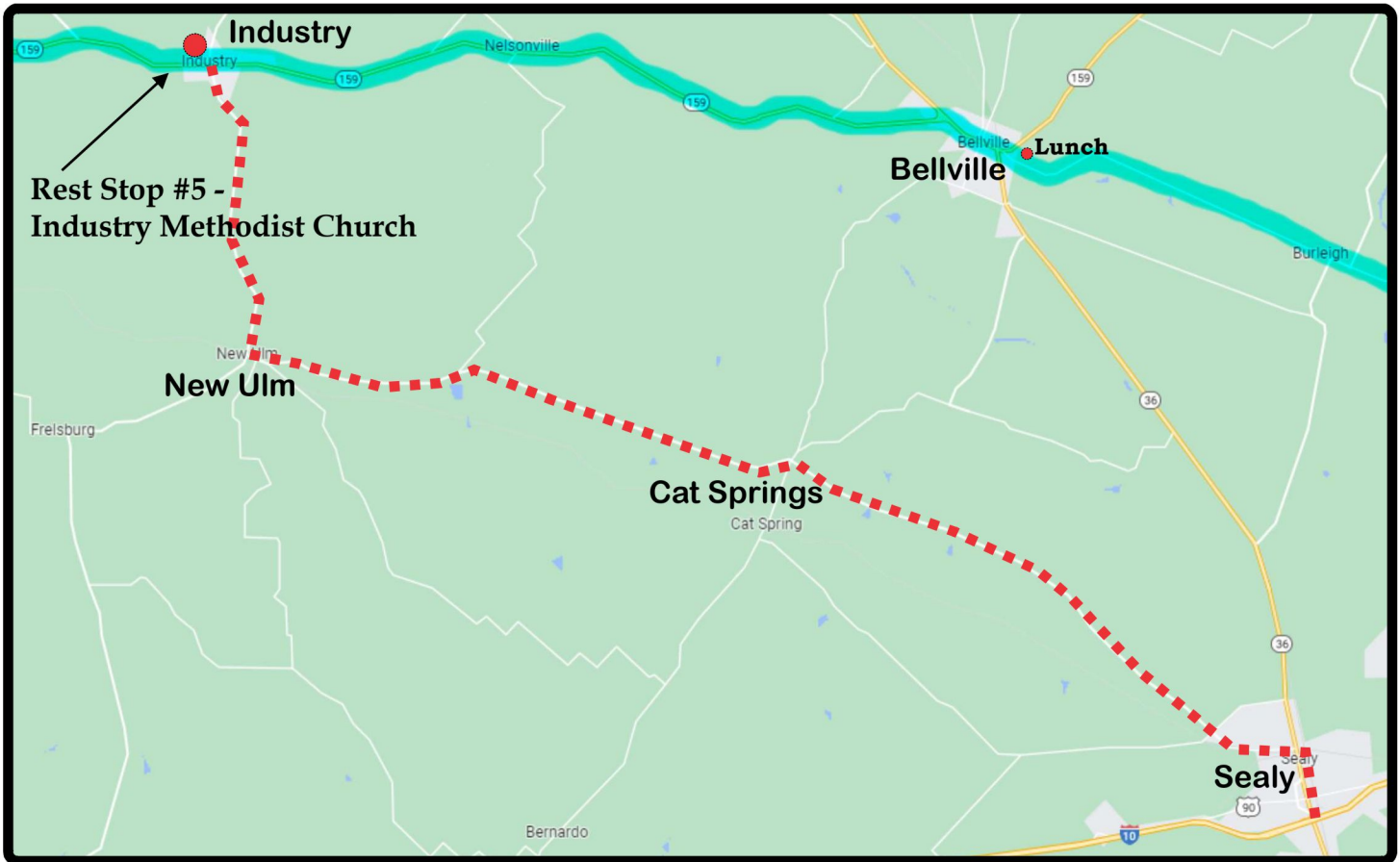
Preferred Vehicle Alternate Route

Saturday Rest Stop #4

VOLUNTEER HOURS - 8:00 AM TO 3:30 PM

- ** These instructions start at I-10 and Highway 36 (Sealy TX.).
- If traveling from downtown Houston, travel on I-10 to Highway 36. Exit the freeway and curve around back to Highway 36, and turn Left (you will be travelling North).
 - Travel 14½ miles North. You will come to the 4-Way Intersection with FM-159. Turn left.
 - Travel 1 mile through Bellville. On the West side of the city, you will come to a Y-Intersection, follow FM-159 to the left. This road is also be called Old Nelsonville Rd.
 - Continue 8.3 miles on FM-159 to the Y-Intersection with Church Road. Take the branch to the right.
 - The BreakPoint will be 100 yards to the right (please park in the 2nd parking lot).

Nelsonville Brethren Church
 902 Church Rd. & FM 159
 Bellville, TX
 GPS: 29.9765N 96.4010W



Graphic Image courtesy of <https://www.google.com/maps>



MS150 Rider Route (Highlighted)

Preferred Vehicle Alternate Route

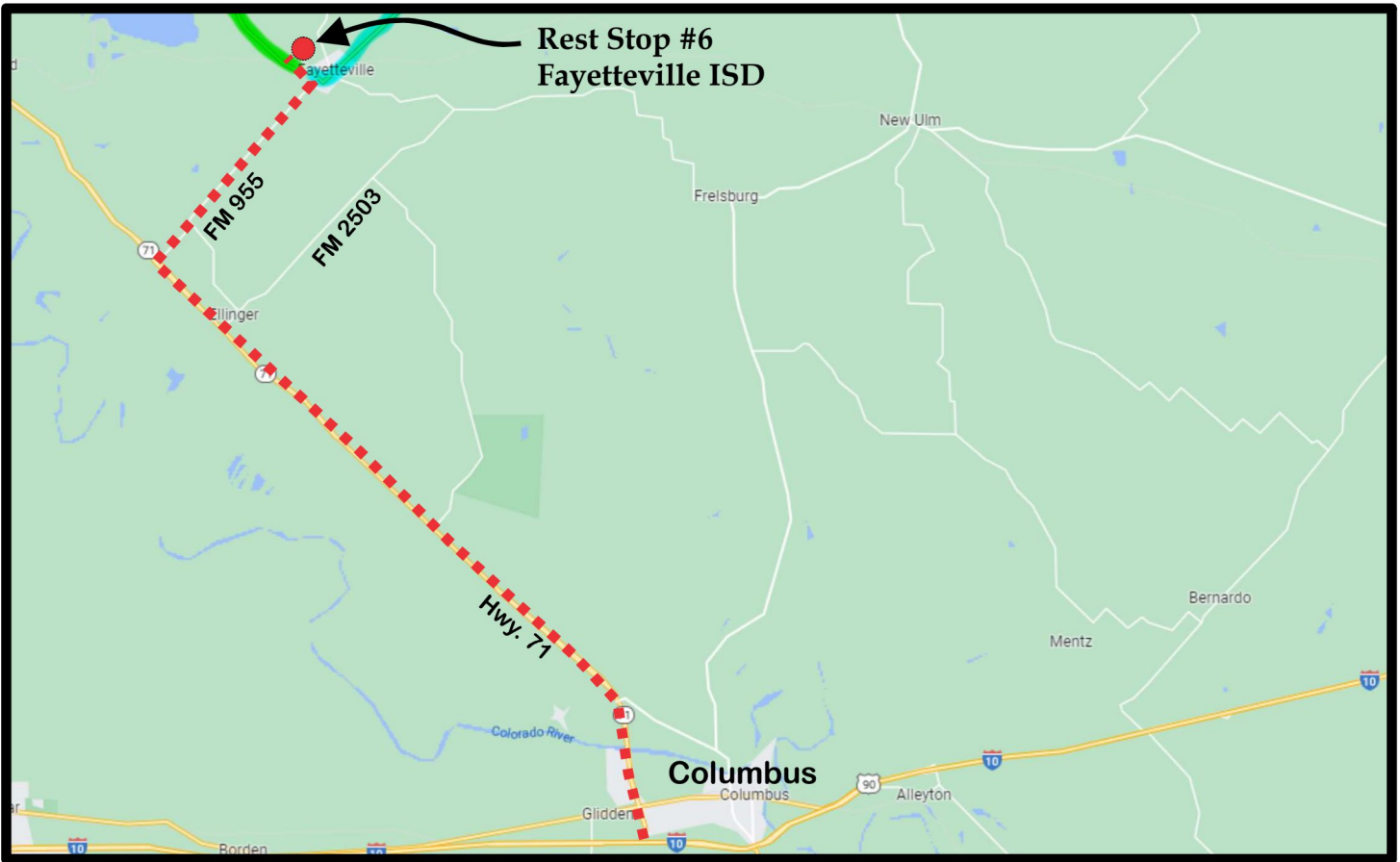
Saturday Rest Stop #5

VOLUNTEER HOURS - 8:00 AM TO 4:30 PM

** These instructions start at I-10 and Highway 36 (Sealy TX.).

- If traveling from downtown Houston, travel on I-10 to Highway 36. Exit the freeway and curve around back to Highway 36, and turn Left (you will be traveling North)
- Travel 1.3 miles North. You will come to the 4-Way Intersection with FM-1094. Turn left.
- Travel 22.3 miles until reaching New Elm. When you come to the intersection with FM-109, turn right (heading North).
- Continue 5.8 miles on FM-109 to Industry. You will come to the 4-Way Intersection with FM-159. Turn left.
- Travel 0.2 miles and take a sharp right turn to Main Street. The entrance to the Industry Methodist Church will be to the left (Pilgrim Rest Lane). Please park on the grass behind the Church.

Industry Methodist Church
 1914 Main St, Industry, TX 78944
 GPS: 29.9741N 96.5040W



Graphic Image courtesy of <https://www.google.com/maps>



MS150 Rider Route (Highlighted)

Preferred Vehicle Alternate Route

Saturday Rest Stop #6

Please avoid the route taken by the riders
VOLUNTEER HOURS - 9:00 AM TO 5:30 PM

** These instructions start at I-10 and Highway 71 (Columbus TX.).

- If traveling from downtown Houston, travel on I-10 to Highway 71. Be aware that there is a Highway 71 Business that goes through downtown Columbus (and has lots of traffic lights). You need to look for the Highway 71 bypass on the West side of Columbus. Exit the freeway and take a right on Highway 71.

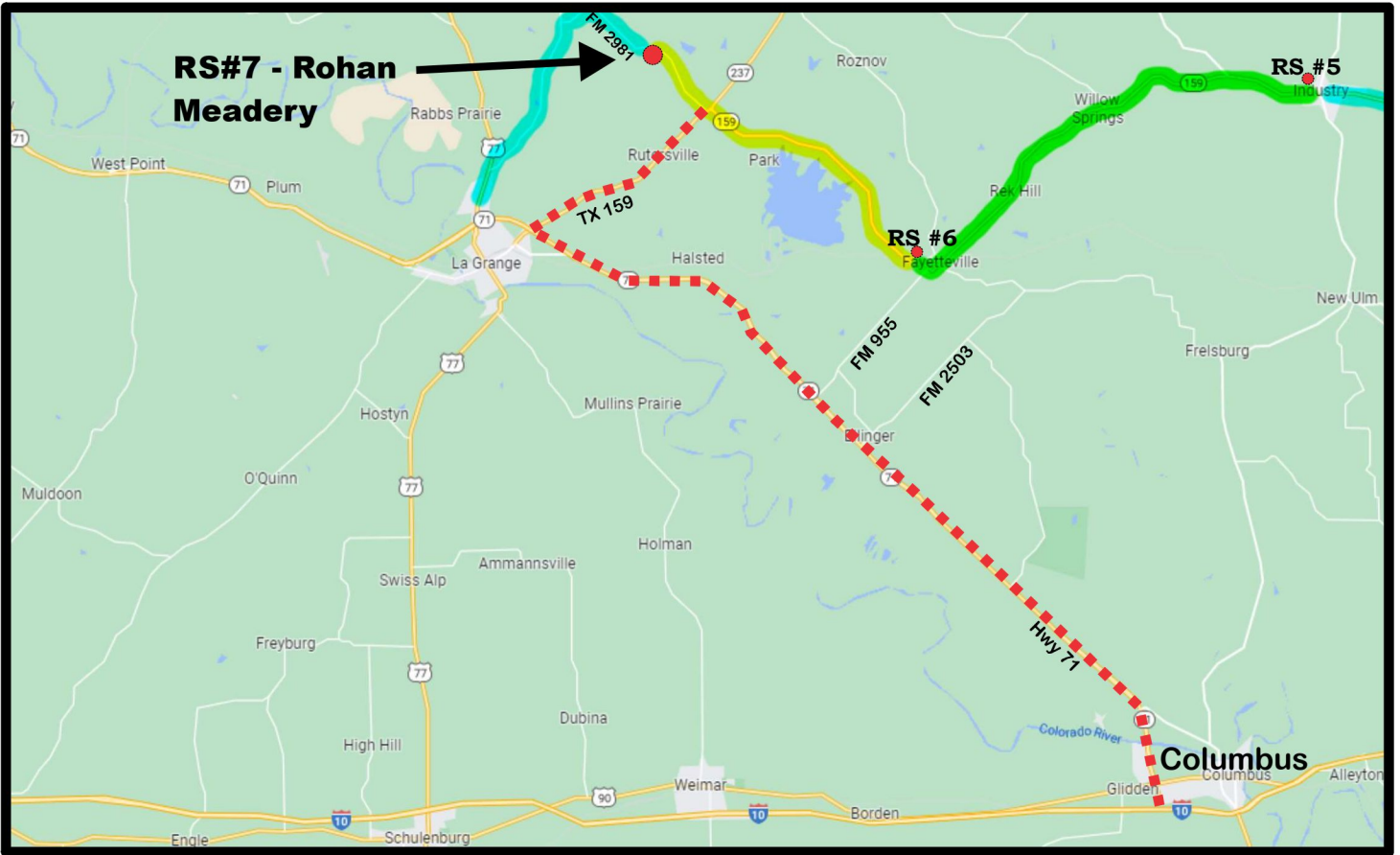
- Travel 14.7 mile North. You will come to the 3-Way Intersection with FM-955. Turn right.

- Travel 4.7 miles on FM-955 to Highway 159. Turn left.

- Travel 0.2 miles and you will see the Fayetteville School (to your right). Volunteer Parking is in the new section of school property on the North side of the campus.

Please refer to the Rest Stop Overview for where the Volunteer Parking is located.

Fayetteville ISD
 618 N Rusk Street
 Fayetteville, TX
 GPS: @ 29.9078274,-96.6845509



Graphic Image courtesy of <https://www.google.com/maps>



MS150 Rider Route (Highlighted)
Preferred Vehicle Alternate Route

Saturday Rest Stop #7

Please avoid the route taken by the riders
VOLUNTEER HOURS - 9:00 AM TO 6:30 PM

** These instructions start at I-10 and Highway 71 (Columbus TX.)

- If traveling from downtown Houston, travel on I-10 to Highway 71. Be aware that there is a Highway 71 Business that goes through downtown Columbus (and has lots of traffic lights). You need to look for the Highway 71 bypass on the West side of Columbus. Exit the freeway and take a right on Highway 71.
- Travel 25 miles North. You will come to the 3-Way Intersection with TX Highway 159. Turn right.
- Travel 5.8 miles on TX Highway 159 to FM 2981, turn Left
- Travel 3.0 miles on FM 2981 to Rohan Meadery, the Rest Stop will be on your left

Rohan Meadery
6002 FM 2981
La Grange, TX 78945
GPS: 29.991434, -96.812261