

# Austin 55 Mile Start - Webberville (Page 1 of 2) Texas MS 150 Bike Ride



View from <https://www.google.com/maps>

**Webberville Park**  
2305 Park Ln.  
Elgin, TX 78621

[WWW.BOLMANSKI.COM](http://WWW.BOLMANSKI.COM)

## LEGEND

2024 REVISION 0

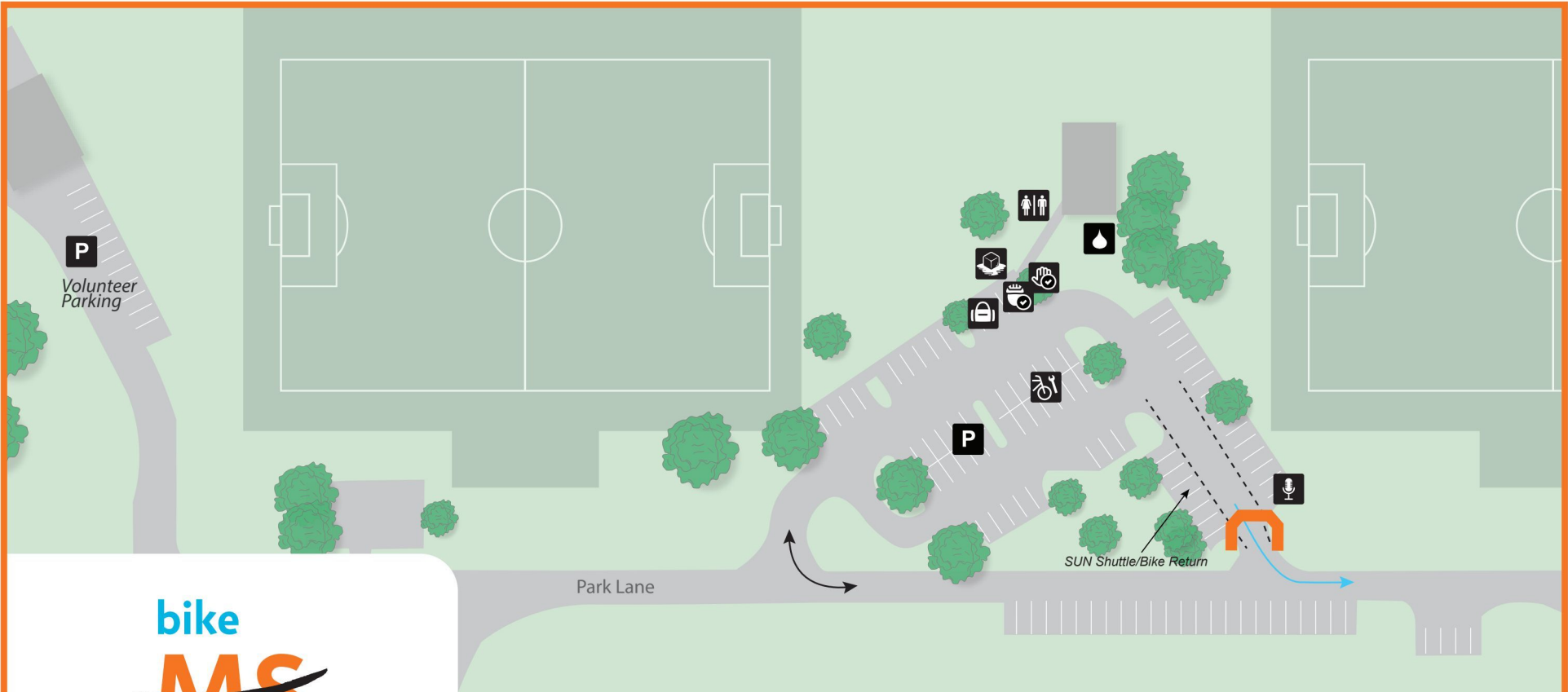
**POLICE**

**Cyclists on 75 MILE MAIN ROUTE**

**Cyclists leaving 55 Mile Start**

**Area used for the 55 Mile Start**





**SAT/SUN • April 27-28, 2024**

**Webberville Park**  
**55 Mile Start**  
 2305 Park Lans  
 Elgin, TX 78621

- |                      |                     |
|----------------------|---------------------|
| Medical 10x10        | Porta Potties       |
| Hydration 10x10      | Bike Racks          |
| Mechanic 10x10       | Ice                 |
| Food 10x10           | Bag Drop 10x10      |
| Rider Check-in 10x10 | Announcer 10x10     |
| Vol. Check-in 10x10  | → Vehicle Direction |
| → Rider Direction    |                     |

# Austin 75 Mile Starting Line (Page 1 of 2)

# Texas MS 150 Bike Ride



View from <https://www.google.com/maps>

**Austin 75 Mile Starting Line**  
**Congress Ave. @ 11th St.**  
**Austin, TX 78701**

2024 REVISION 0

[WWW.BOLMANSKI.COM](http://WWW.BOLMANSKI.COM)

LEGEND	
<b>POLICE</b>	
<b>Direction of Cyclist - 75 Mile Start</b>	
<b>Area used for the site</b>	



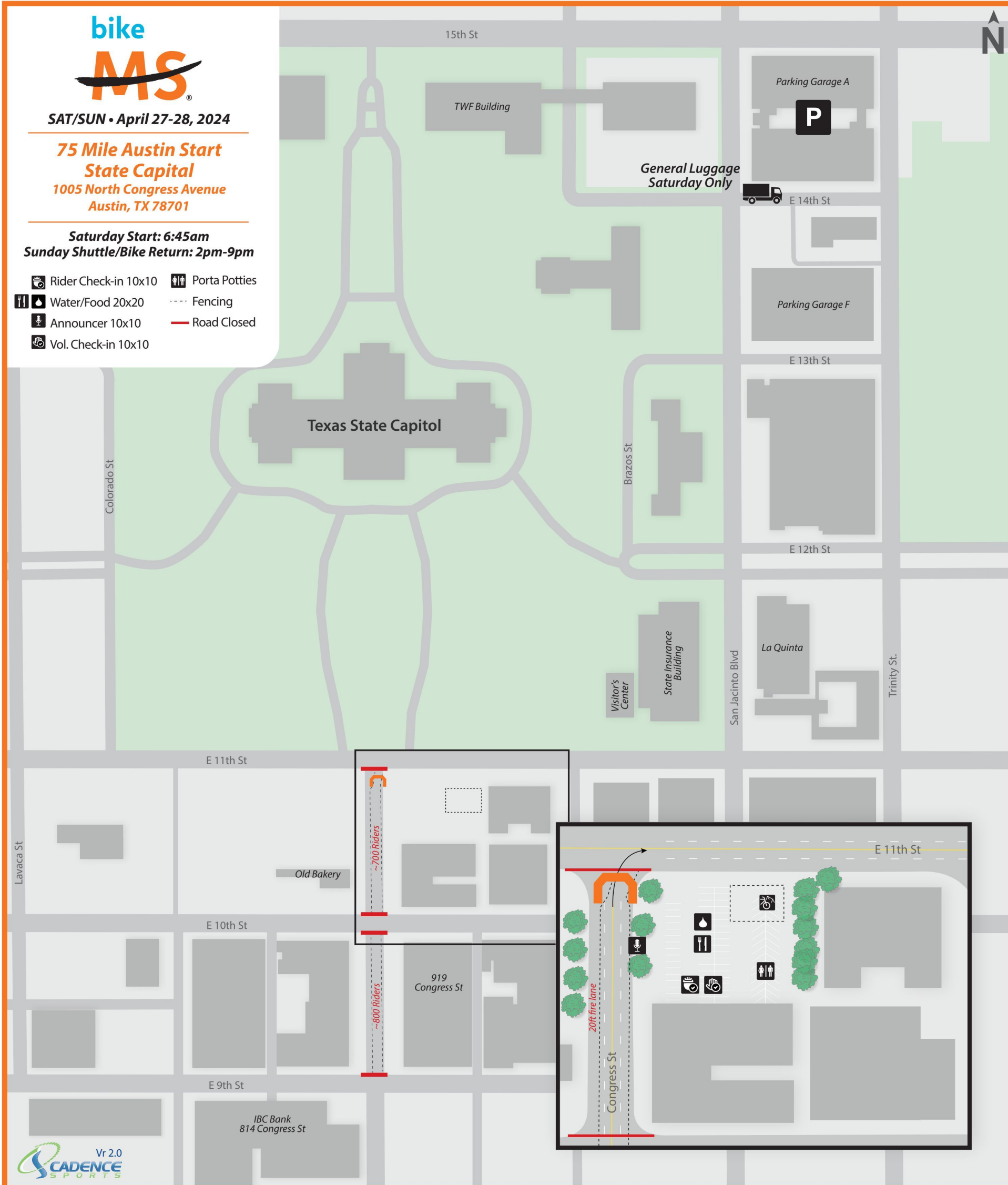
SAT/SUN • April 27-28, 2024

### 75 Mile Austin Start State Capital

1005 North Congress Avenue  
Austin, TX 78701

**Saturday Start: 6:45am**  
**Sunday Shuttle/Bike Return: 2pm-9pm**

- Rider Check-in 10x10
- Water/Food 20x20
- Announcer 10x10
- Vol. Check-in 10x10
- Porta Potties
- Fencing
- Road Closed








View from [www.google.com/maps](http://www.google.com/maps)

**Calvary Baptist Church**  
3005 TX-150 Loop  
Bastrop, TX 78602

[WWW.BOLMANSKI.COM](http://WWW.BOLMANSKI.COM)

2024 REVISION 0

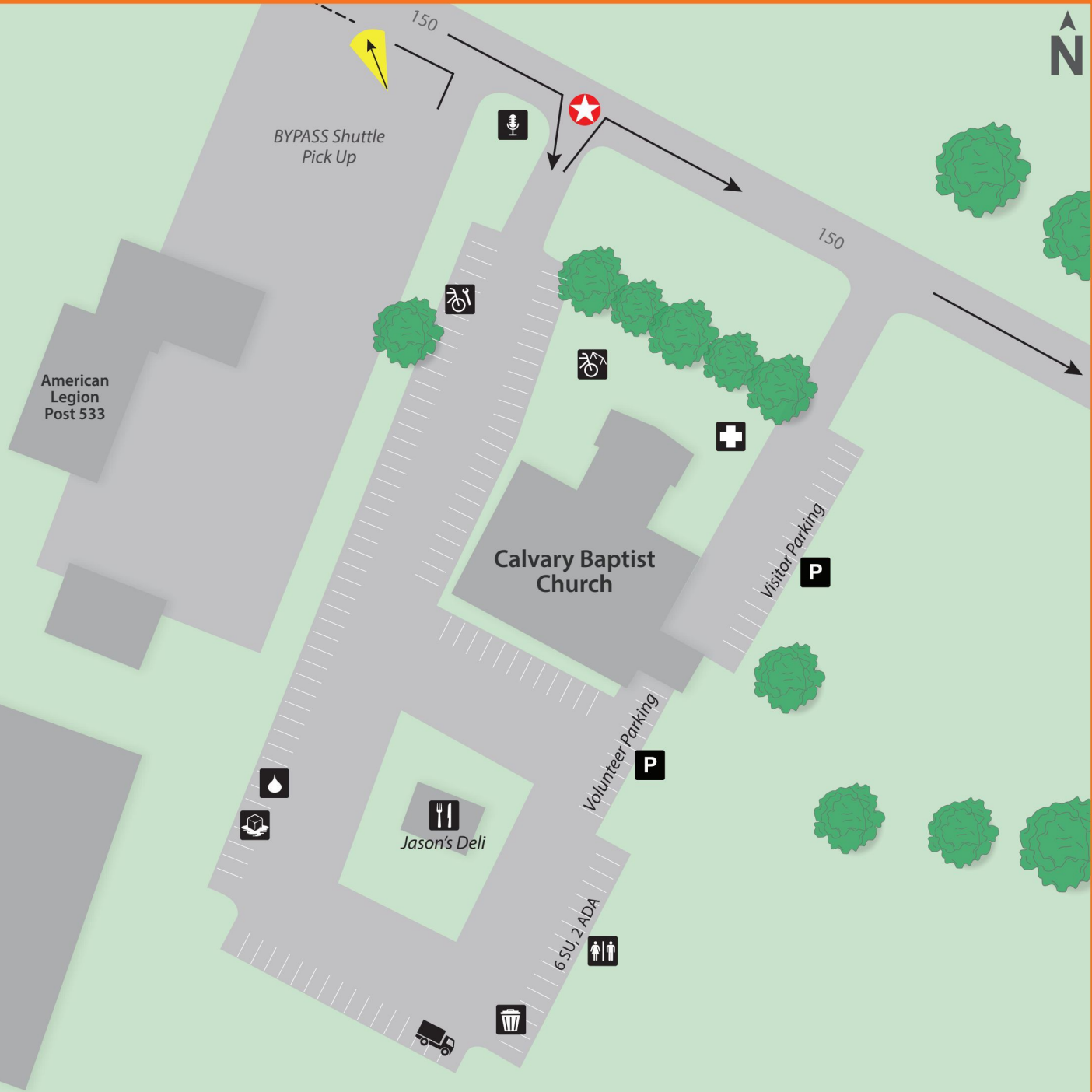
LEGEND	
POLICE	
Direction of riders using Rest Stop	
Area used for the site	



Saturday • April 27, 2024

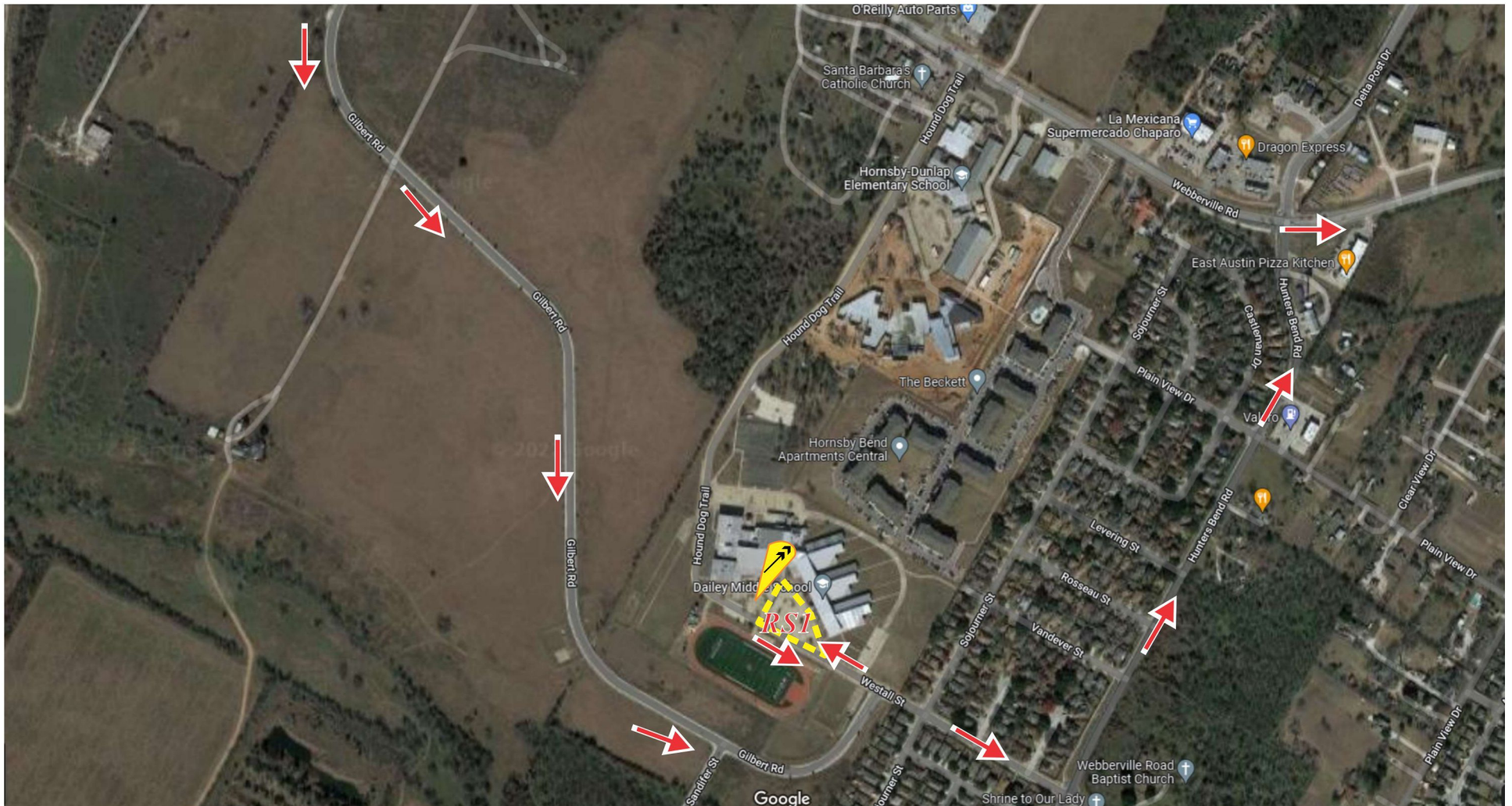
**AUS LUNCH**  
**Calvary Baptist Church**  
3005 TX-150  
Bastrop, TX 78602

- |                 |                 |
|-----------------|-----------------|
| Announcer 10x10 | Ice             |
| Hydration 10x10 | Bike Racks      |
| Mechanic 10x10  | Dumpster        |
| Medical 10x30   | Traffic Control |
| Food 30x60      | Rider Direction |
| Porta Potties   |                 |



# Austin Saturday Rest Stop 1 (Page 1 of 2)

# Texas MS 150 Bike Ride



View from <https://www.google.com/maps>

**Dailey Middle School**  
**14000 Westall Street**  
**Austin, TX 78725**

[WWW.BOLMANSKI.COM](http://WWW.BOLMANSKI.COM)








2024 REVISION 0

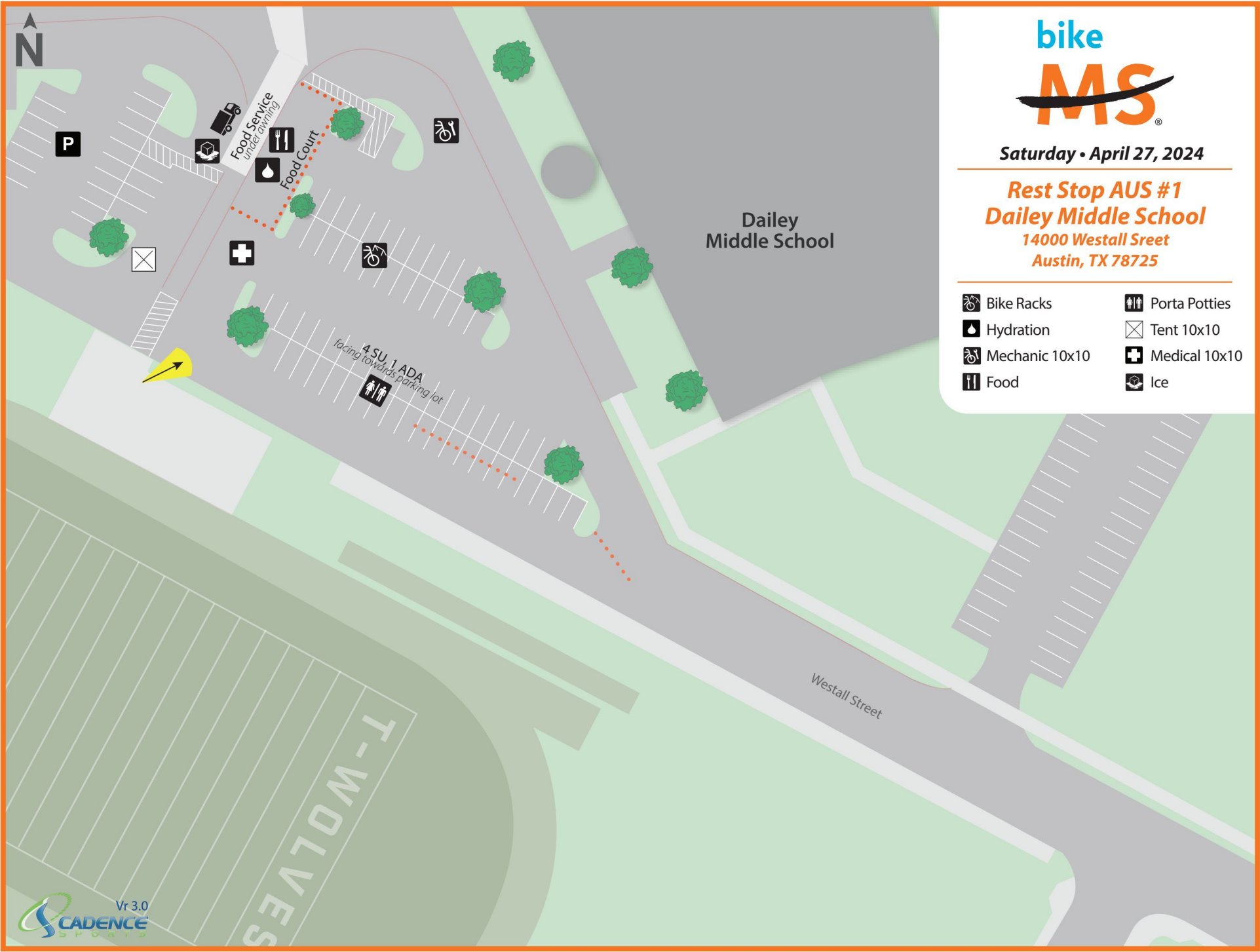
LEGEND	
<b>POLICE</b>	
<b>Direction of riders using Rest Stop</b>	
<b>Area used for the site</b>	



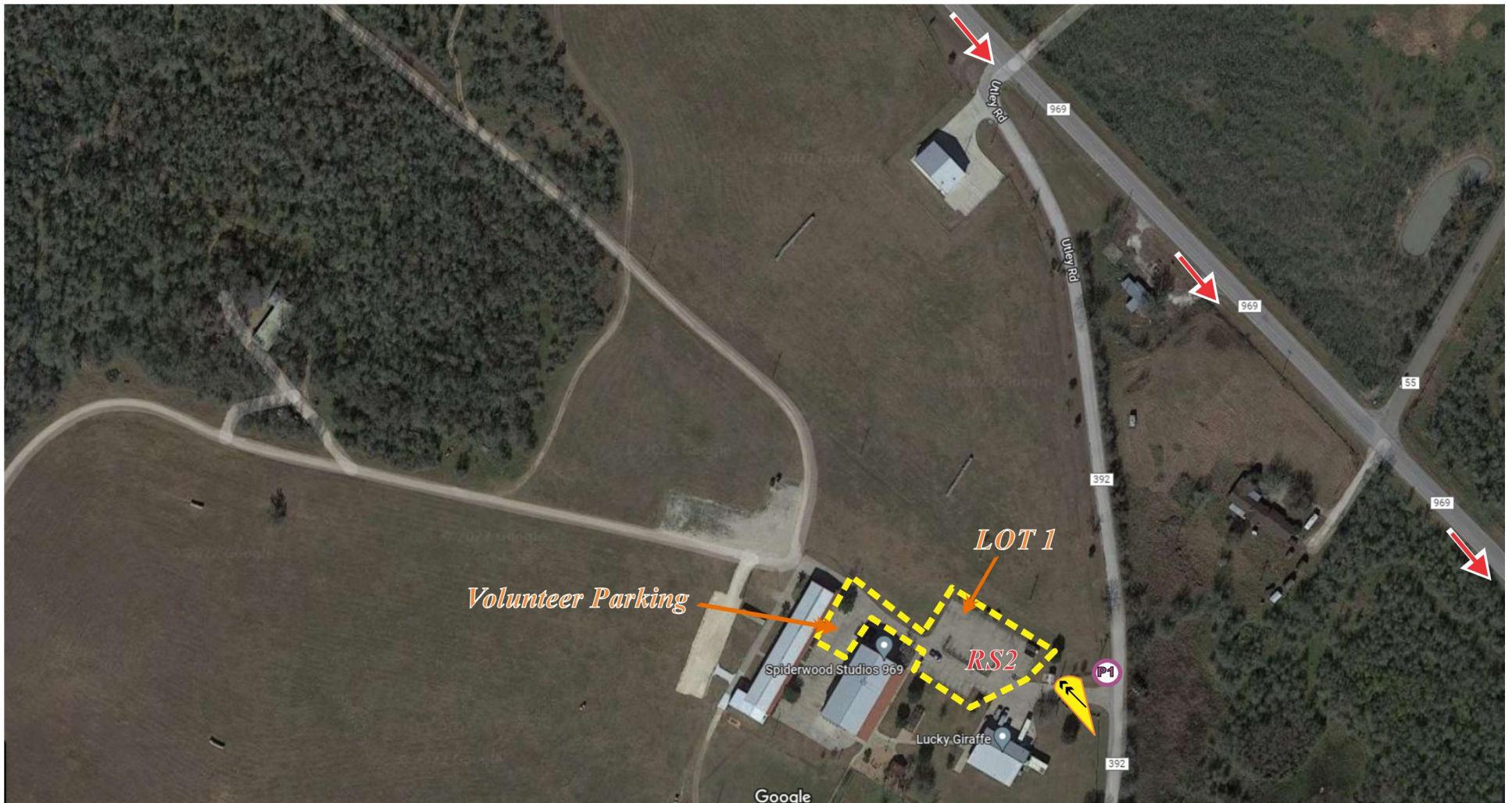
Saturday • April 27, 2024

**Rest Stop AUS #1**  
**Dailey Middle School**  
14000 Westall Sreet  
Austin, TX 78725

-  Bike Racks
-  Hydration
-  Mechanic 10x10
-  Food
-  Porta Potties
-  Tent 10x10
-  Medical 10x10
-  Ice







View from <https://www.google.com/maps>

**Spiderwood Studios**  
**140 Utley Road**  
**Elgin, TX 78621**

[WWW.BOLMANSKI.COM](http://WWW.BOLMANSKI.COM)

2024 REVISION 0

LEGEND	
POLICE	
Direction of riders using Rest Stop	
Area used for the site	



Saturday • April 27, 2024

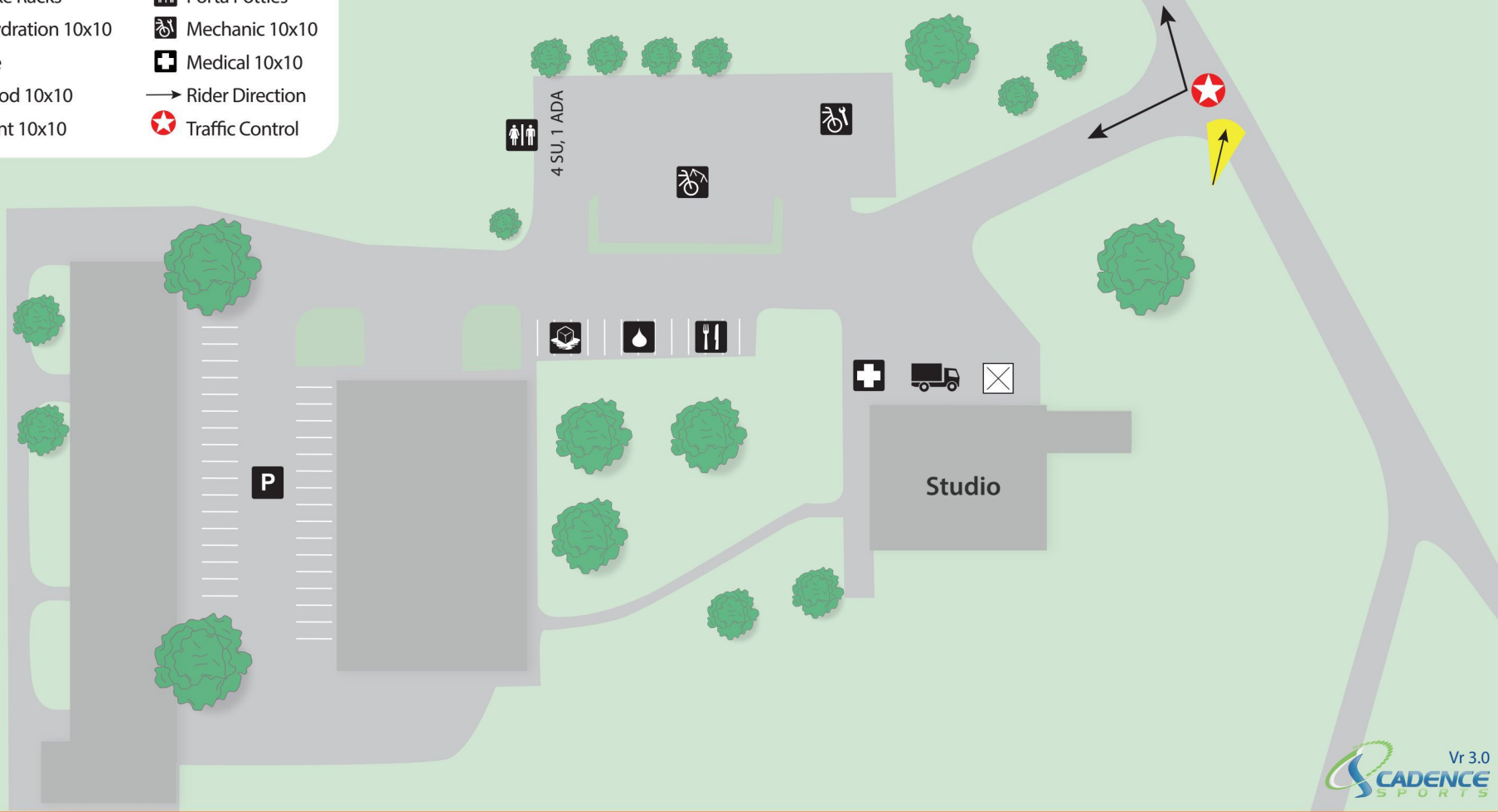
### Rest Stop AUS #2 Spiderwood Studios

140 Utley Road  
Elgin, TX 78621

- Bike Racks
- Hydration 10x10
- Ice
- Food 10x10
- Tent 10x10
- Porta Potties
- Mechanic 10x10
- Medical 10x10
- Rider Direction
- Traffic Control



392 / Utley Rd.





View from <https://www.google.com/maps>

**Buescher State Park**  
**2282 Park Road 1C**  
**Smithville, TX 78957**

[WWW.BOLMANSKI.COM](http://WWW.BOLMANSKI.COM)

2024 REVISION 0

LEGEND	
POLICE	
Direction of riders using Rest Stop	
Area used for the site	



Saturday • April 27, 2024

**Rest Stop AUS #3**  
**Buescher State Park**  
2282 Park Road 1C  
Smithville, TX 78957

- |                 |                   |
|-----------------|-------------------|
| Medical 10x10   | Porta Potties     |
| Hydration 10x10 | Bike Racks        |
| Mechanic 10x10  | Ice               |
| Food 10x10      | → Rider Direction |





View from <https://www.google.com/maps>

**Winchester UMC / Midway Food**  
128 Frio Street  
La Grange, TX 78945

[WWW.BOLMANSKI.COM](http://WWW.BOLMANSKI.COM)

## LEGEND

**POLICE**



**Direction of riders using Rest Stop**



**Direction of SAGS using Rest Stop**



**Area used for the site**



2024 REVISION 0



Saturday • April 27, 2024

### Rest Stop AUS #4 Atkins Property

128 Frio St

La Grange, TX 78945

- |                 |                 |
|-----------------|-----------------|
| Medical 10x10   | Porta Potties   |
| Hydration 10x10 | Bike Racks      |
| Mechanic 10x10  | Ice             |
| Food 10x10      | Rider Direction |
| SAG Tent 10x10  | SAG Direction   |

